



MONTHLY MEMBERSHIP PROGRESS REPORT

Results as of: 9/30/2015

Multiple District 2

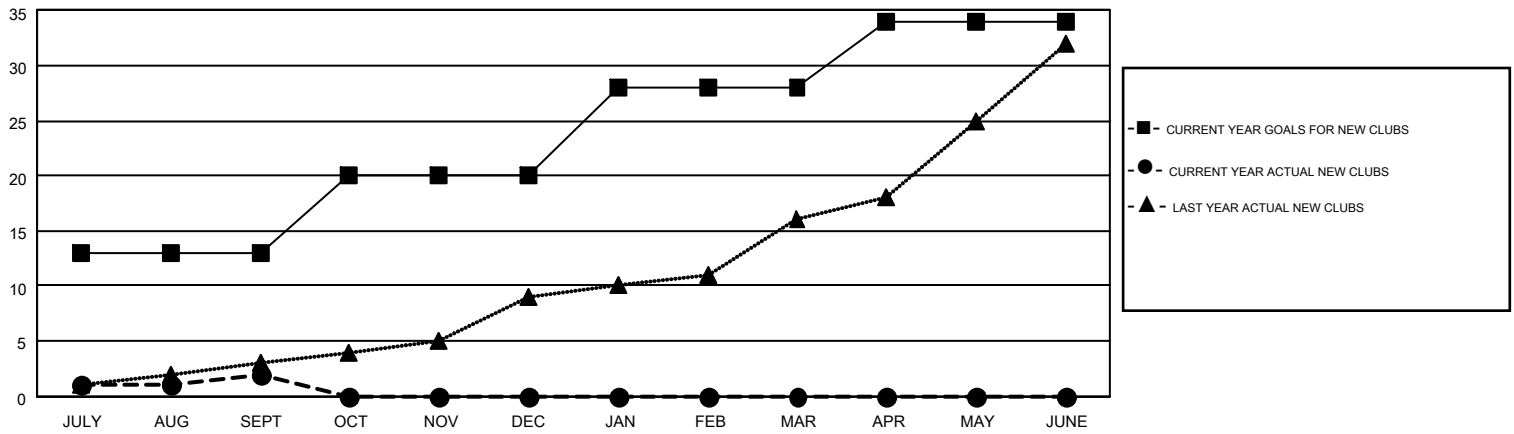
LOCATION: TEXAS

GMT: HAL GRIFFIN

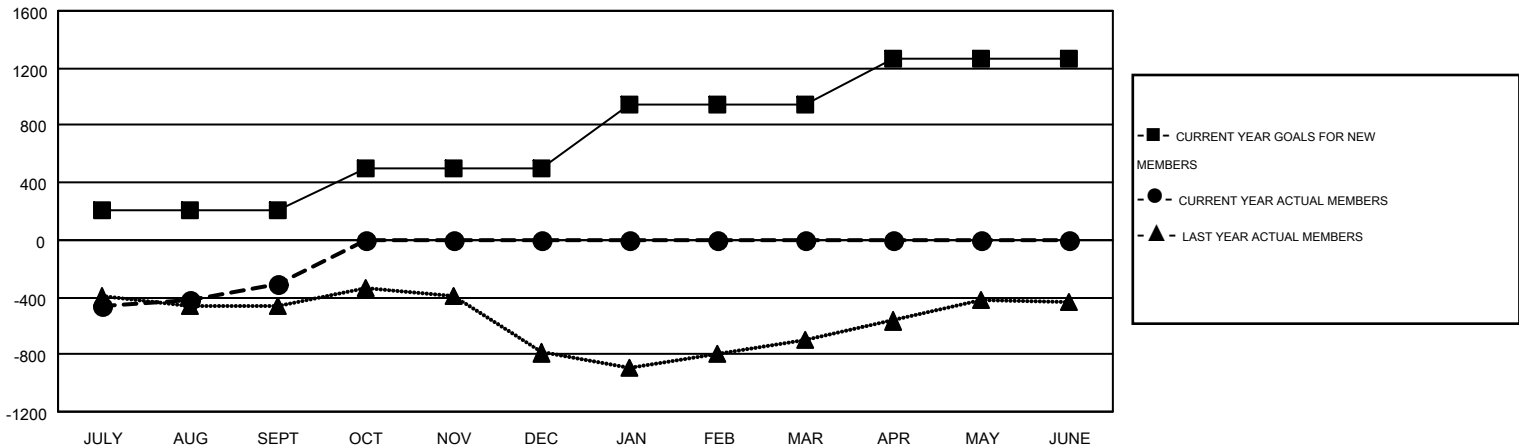
GMT CA 1

| Clubs | | | | | Members | | | | |
|-----------------------|---------------|-----------|---------------|---------------|-----------------------|-----------------|-------------------------------|-----------------|---------------|
| RESULTS FOR 2015-2016 | | | | | RESULTS FOR 2015-2016 | | | | |
| QUARTER | NEW CLUB GOAL | NEW CLUBS | DROPPED CLUBS | NET GAIN/LOSS | QUARTER | NEW MEMBER GOAL | CHARTER AND NEW MEMBERS ADDED | DROPPED MEMBERS | NET GAIN/LOSS |
| JULY/AUG/SEPT | 13 | 2 | 4 | -2 | JULY/AUG/SEPT | 212 | 974 | 1,284 | -310 |
| OCT/NOV/DEC | 7 | 0 | 0 | 0 | OCT/NOV/DEC | 289 | 0 | 0 | 0 |
| JAN/FEB/MAR | 8 | 0 | 0 | 0 | JAN/FEB/MAR | 441 | 0 | 0 | 0 |
| APR/MAY/JUNE | 6 | 0 | 0 | 0 | APR/MAY/JUNE | 325 | 0 | 0 | 0 |

GOALS AND ACTUAL NEW CLUBS CUMULATIVE



GOALS AND ACTUAL MEMBERS CUMULATIVE



| | | | |
|------------------------|--|---|-----------------|
| DROPPED CLUBS: 4 | 339 CLUBS OF 897 ADDED 1 OR MORE NEW MEMBERS | <u>GENDER DISTRIBUTION</u> | |
| <u>DROPPED MEMBERS</u> | | MALE | 17,472 (67.00%) |
| DECEASED | 81 | FEMALE | 8,605 (33.00%) |
| CLUB CANCELLED | 3 | CLICK HERE FOR HEALTH ASSESSMENT DATA | |
| OTHER | 1,199 | FAMILY UNIT MEMBERS | 3,945 |
| TOTAL | 1,283 | HEAD OF HOUSEHOLD | 1,933 |
| | | NON-HEAD OF HOUSEHOLD | 2,012 |